

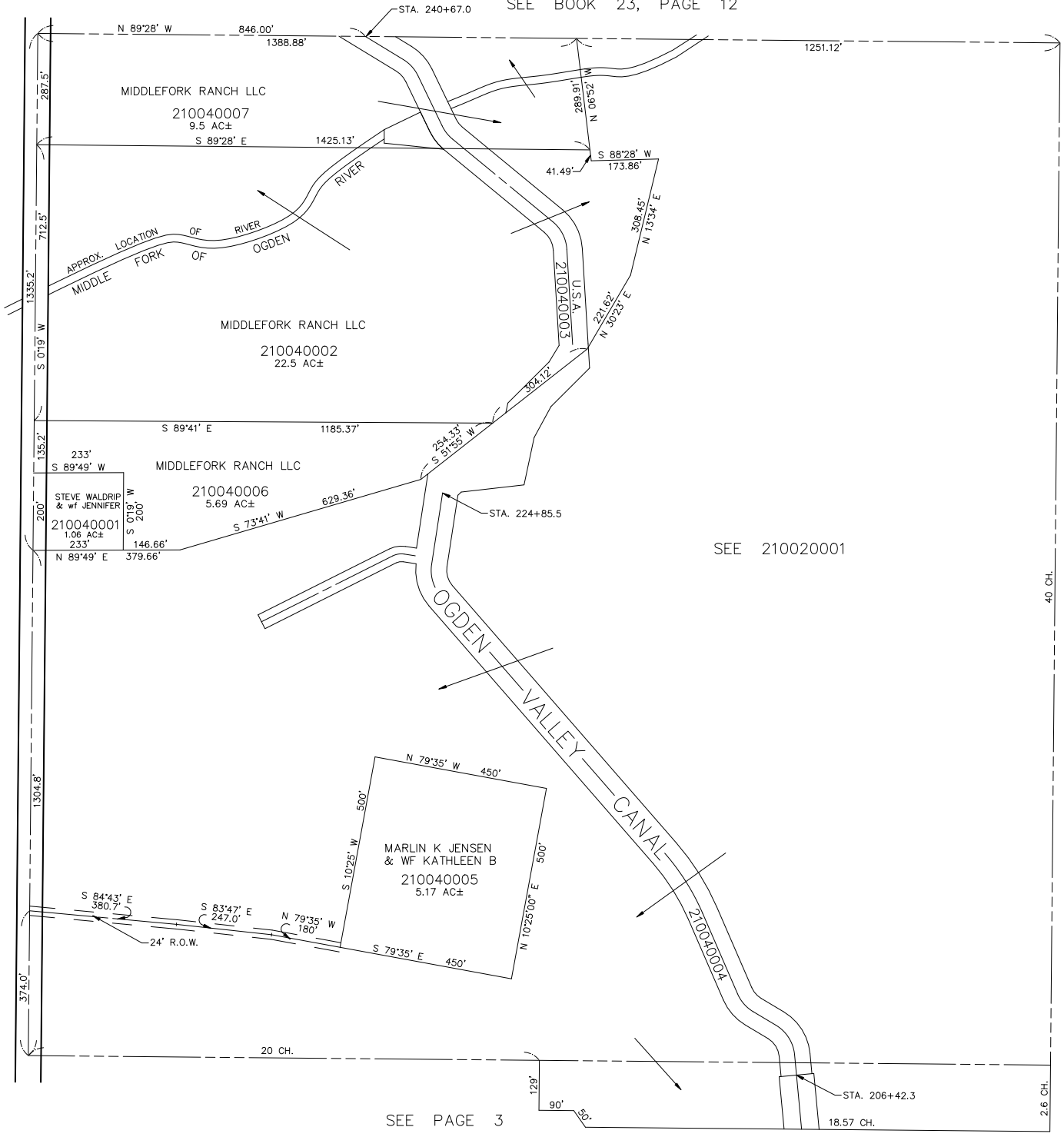
N.W. 1/4
 SECTION 5, T.6N., R.2E., S.L.B.&M.
 IN WEBER COUNTY
 SCALE 1" = 200'

TAXING UNIT: 318

SEE BOOK 23, PAGE 12

SEE PAGE 5

SEE PAGE 2



SEE 210020001

SEE PAGE 3

40 CH.

2.6 CH.